

# ON-Score

USER MANUAL



## INTRODUCTION

What is ON-Score . . . . .	3
The Interface . . . . .	4
The Scoreboard . . . . .	4
The Control Screen . . . . .	4
Need help with your content? . . . . .	5
Technical Support . . . . .	5

## CUSTOMIZE THE INTERFACE

Access the menu . . . . .	6
Setting up the game . . . . .	7
Changing the layout . . . . .	7
Changing the scoreboard title . . . . .	8
Adding a logo . . . . .	8
Changing the look . . . . .	9
Changing the colors . . . . .	9
Setting a background image . . . . .	9
Changing texts . . . . .	10
Changing the font . . . . .	10
Changing the teams . . . . .	11
Exporting the teams . . . . .	11

## VIDEO BROADCASTING

Creating a Video Queue . . . . .	12
Editing a Video Queue . . . . .	12
Playing A Video . . . . .	13

## CONTROL THE DISPLAY

Control Interface . . . . .	14
Control Screen . . . . .	14
Correction Screen . . . . .	14
Keyboard shortcuts . . . . .	15
Control Screen shortcuts . . . . .	16
Web Remote . . . . .	17
Enabling the Web Remote . . . . .	17
Using the Web Remote . . . . .	18
Main interface . . . . .	18
Corrections tab. . . . .	18

## CONTROL THE GAME

Starting a match . . . . .	19
Changing the scores . . . . .	19
Penalties. . . . .	20
Timers . . . . .	21

## TROUBLESHOOTING

## WHAT IS ON-SCORE

ON-Score is a software designed for Libertévision and Nummax displays, providing the possibility to display a professional scoreboard for scoring various sporting events.

- **Customizable**

You have the freedom to customize ON-Score to your preferences by changing the names, logos and colors of teams, or by adding background images.

- **Control remotely**

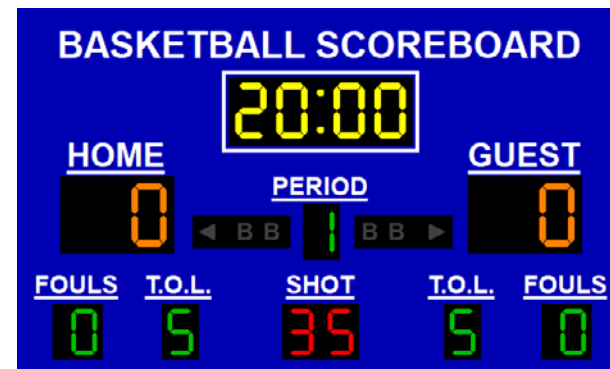
ON-Score lets you remotely operate your display. You can control your game from the ON-Score tablet or any smartphone.

- **Sport-specific**

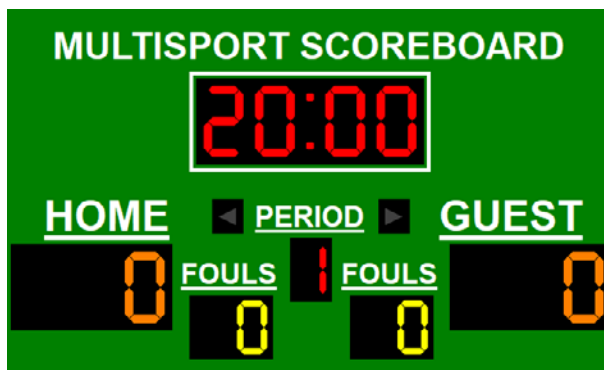
Each version of the software is designed to suit a specific sport, offering a customized interface and game-specific settings.



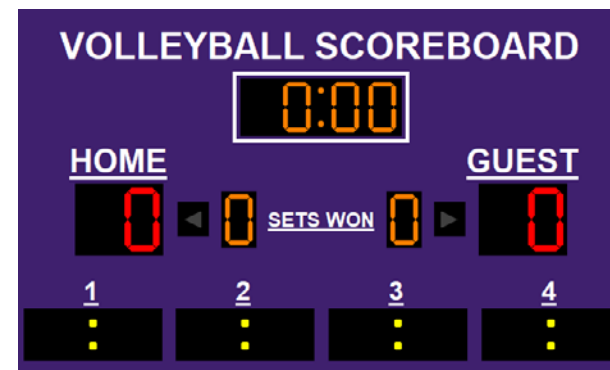
Hockey Pro v3



Basketball Pro v3



Multisport Pro v3



Volleyball Pro v3

## THE INTERFACE

### The Scoreboard

The **Scoreboard**, also referred to the **Display Screen**, is the interface displayed on your LED screen.

You can customize it to suit your preferences, using a variety of settings to give it the look you want.

Possible layouts vary according to software version and sport.

**Customize the interface, page 6**

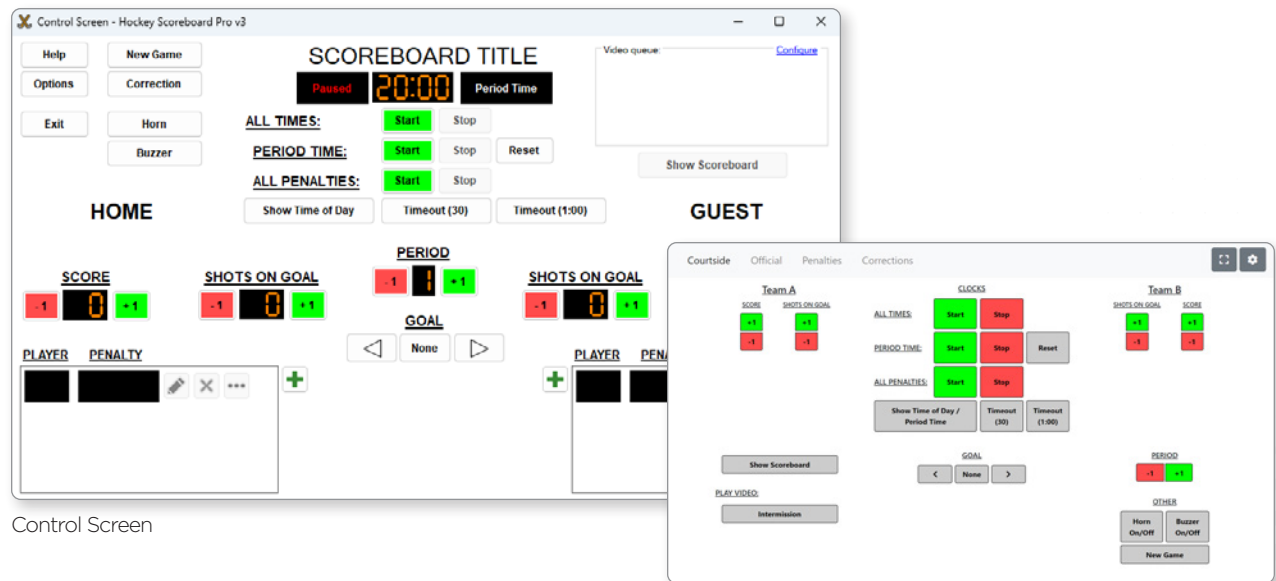


! This guide is based on the Hockey Pro v3 version. Available options may differ depending on your software version.

### The Control Screen

This window is the main interface for controlling your scoreboard. It allows you to control the game and access other menus.

**Control the display, page 14**



Control Screen

Web Remote



## NEED HELP WITH YOUR CONTENT?

Search no more!

Take advantage of our graphic design services now.

Contacte us to receive our documentation.

1-877 255-3471 | [info@nummax.com](mailto:info@nummax.com)

## TECHNICAL SUPPORT

At any time you can contact our technical support for any software or technical questions at:

[info@libertelevision.com](mailto:info@libertelevision.com)

1-855 437-8720

8 a.m. to 4:30 p.m. Eastern Time.

French and English.



To customize the default interface, follow this guide and switch to a personalized interface, as shown in the example on the right.

## ACCESSING THE MENU

Start by opening the options menu.

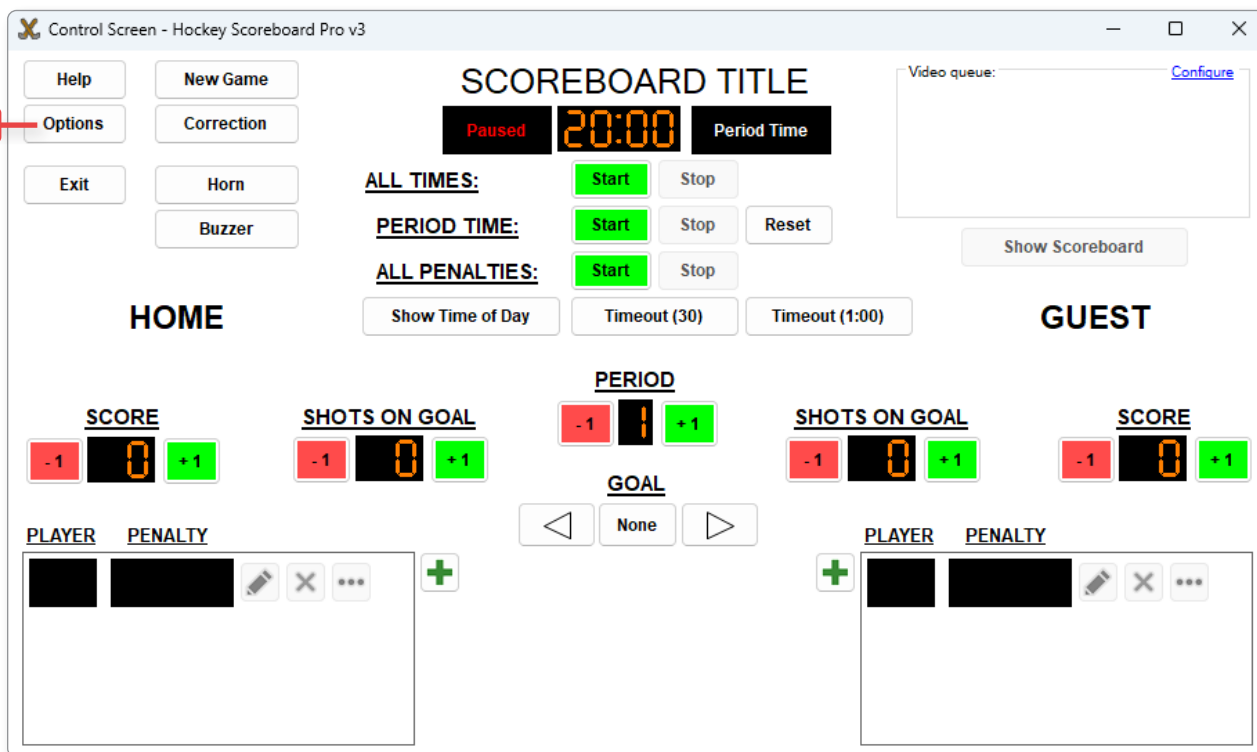
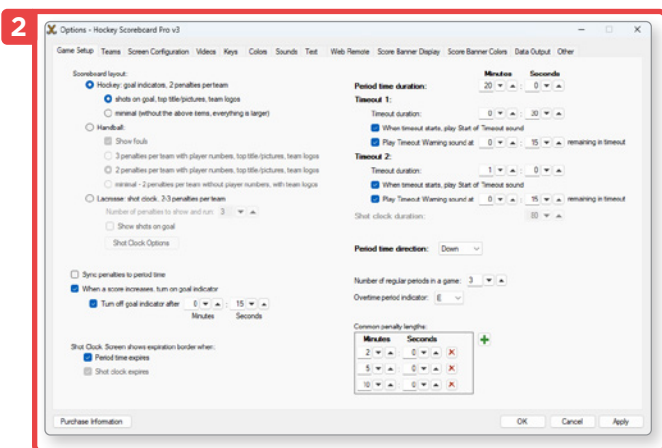
- 1 Click on the **Options** button on your Control Screen or use the **F2** key on your keyboard to open the options menu.
- 2 The options menu lets you configure your interface, modify your game settings and use a wide range of functions.



Default display



Customized display following this guide



## SETTING UP THE GAME

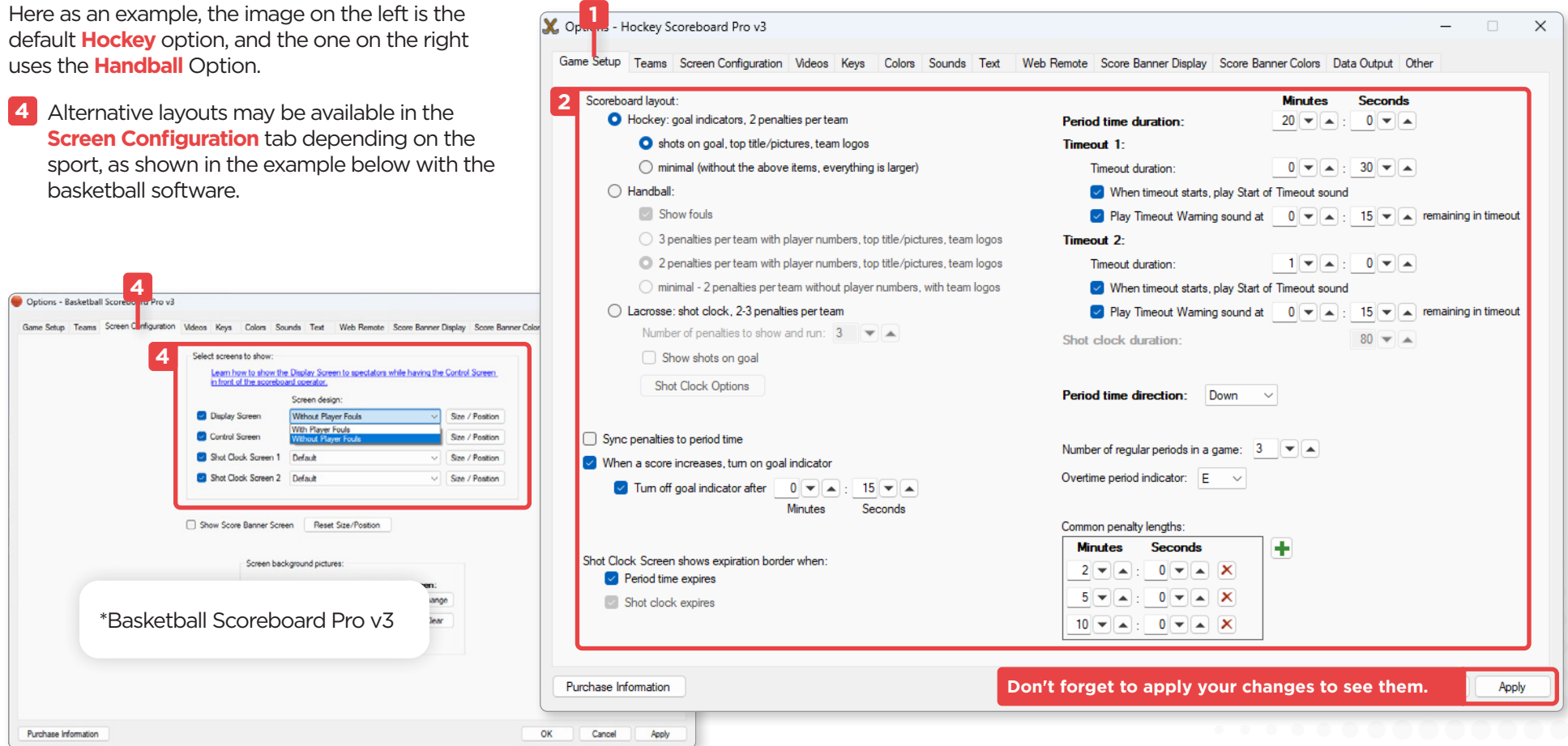
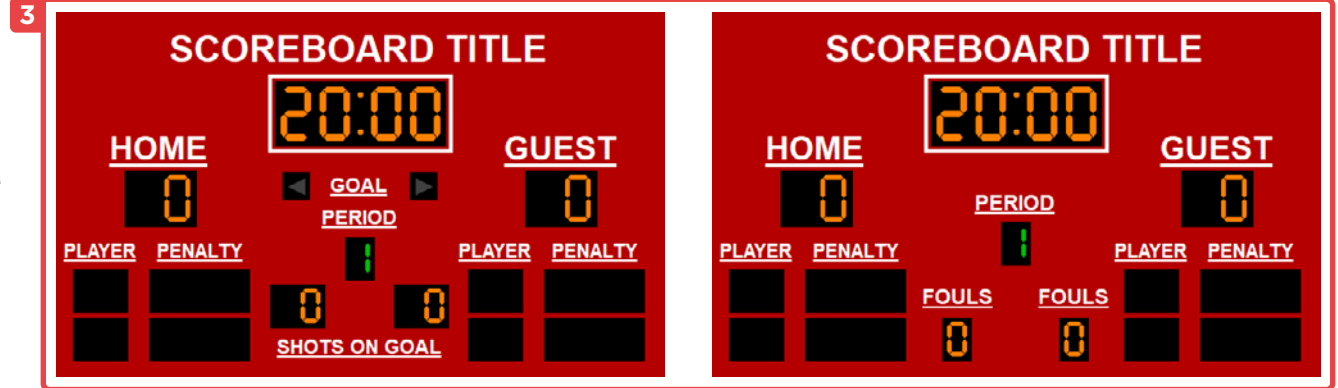
- 1 Open the **Game Setup** tab.
- 2 Customize your game settings, which may vary depending on the version of the software you are using.

## Changing the layout

- 3 The layout of your display may change depending on the options selected.

Here as an example, the image on the left is the default **Hockey** option, and the one on the right uses the **Handball** Option.

- 4 Alternative layouts may be available in the **Screen Configuration** tab depending on the sport, as shown in the example below with the basketball software.

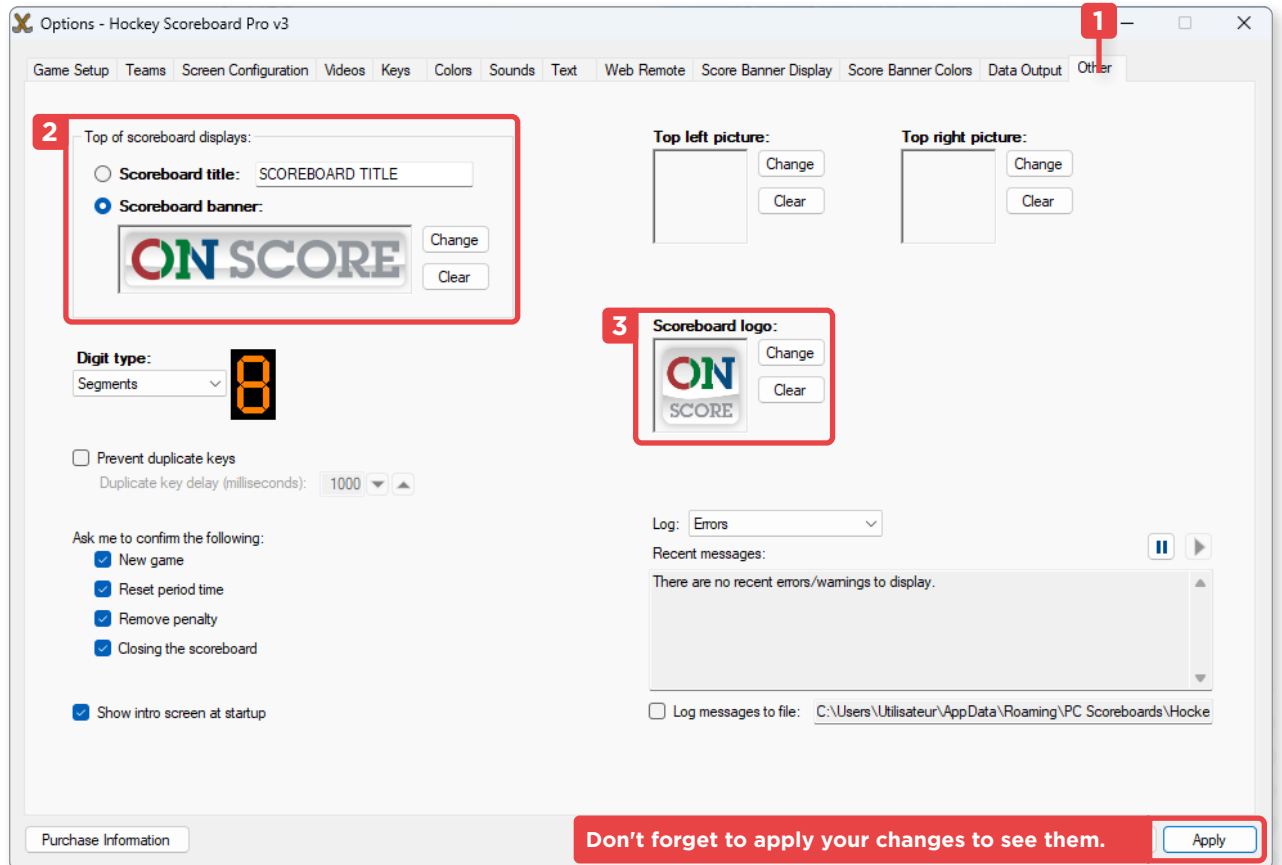


### Changing the scoreboard title

- 1 Open the **Other** tab.
- 2 You can change the scoreboard title or use an image as a banner.

### Adding a logo

- 3 To add a logo, click on the **Change** button, to remove it, click on **Clear**.





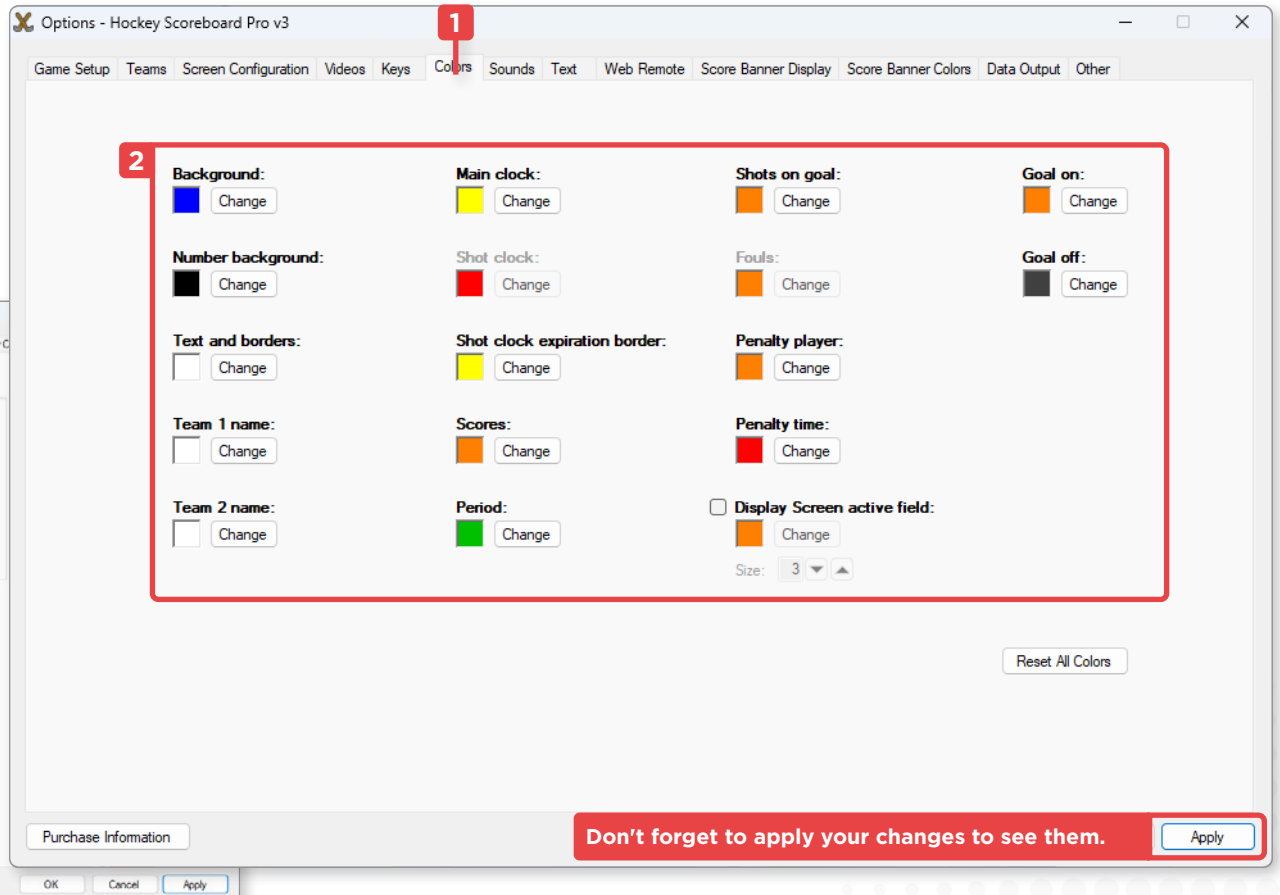
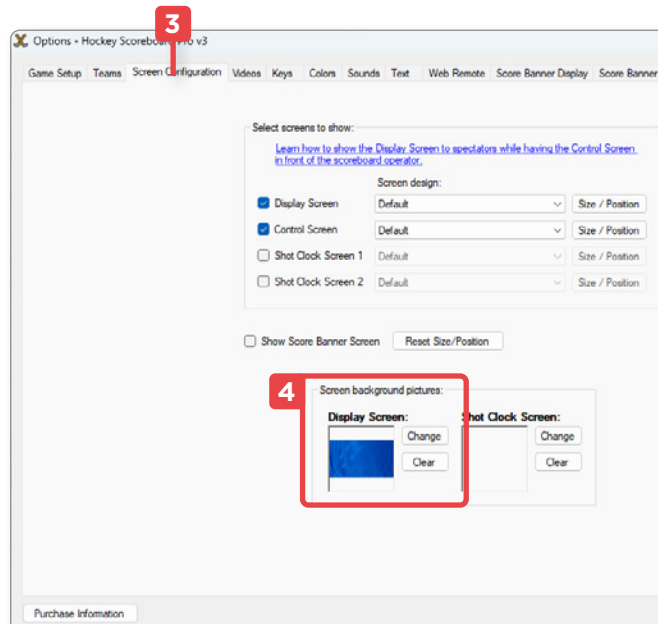
## CHANGING THE LOOK

### Changing the colors

- 1 Open the **Colors** tab.
- 2 Click on the **Change** button to change the colors to suit your preferences.

### Setting a background image

- 3 Open the **Screen Configuration** tab.
- 4 Select the **Change** button under the option **Screen background pictures** for the **Display Screen** in order to change the background image of your display, or click on the **Clear** button to remove it.



Don't forget to apply your changes to see them. Apply

### Changing texts

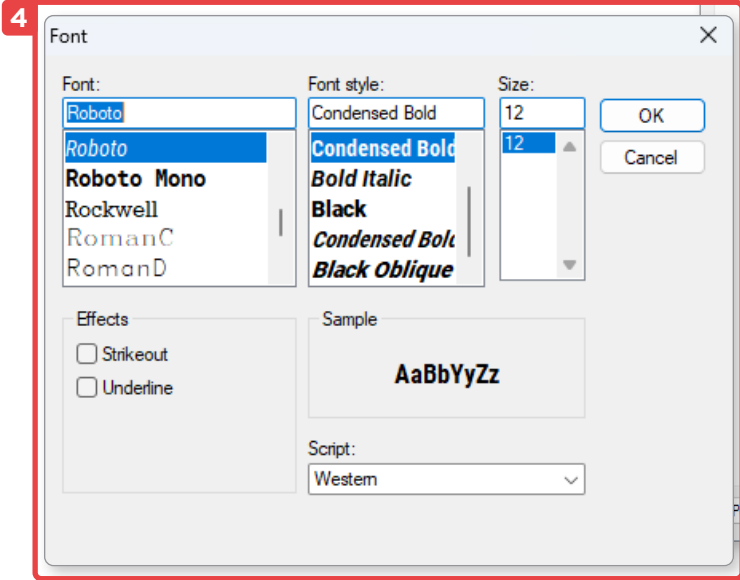
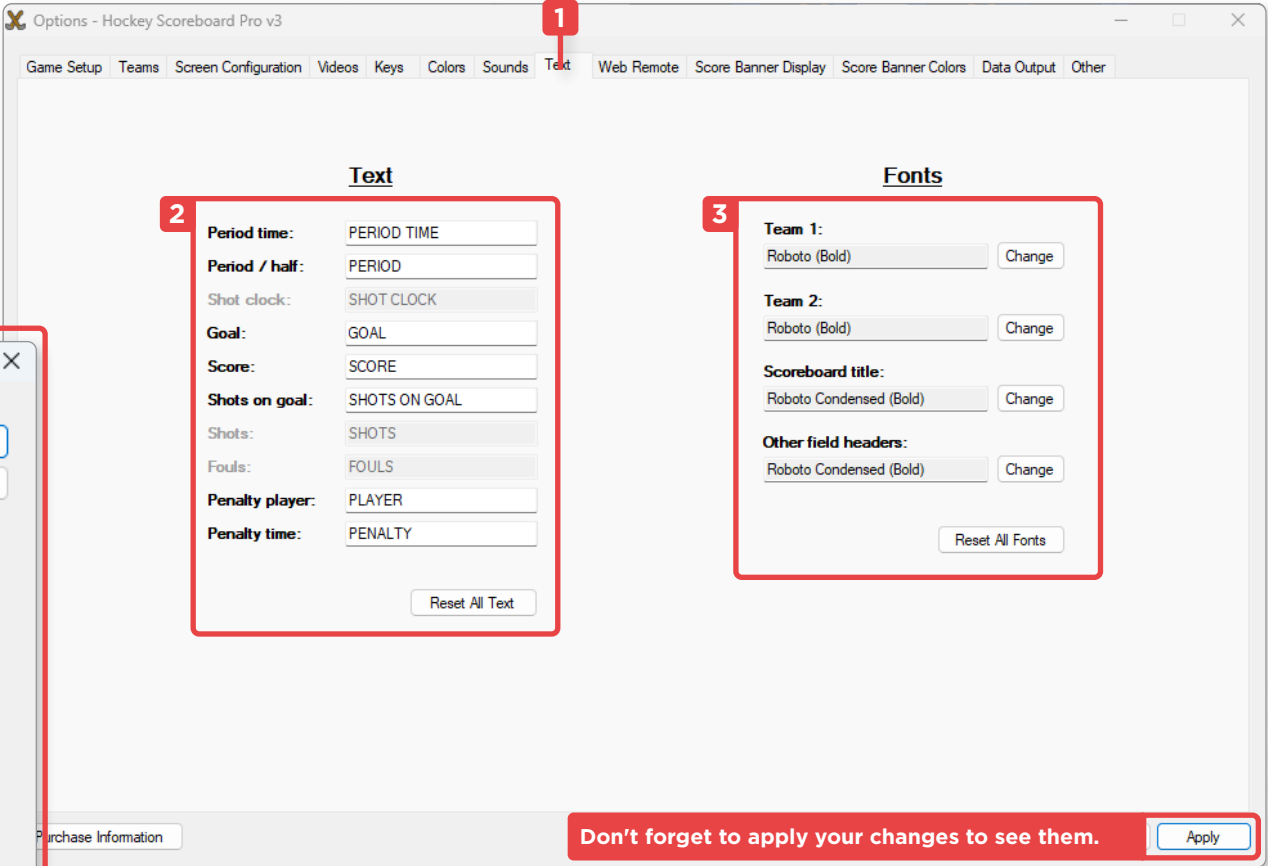
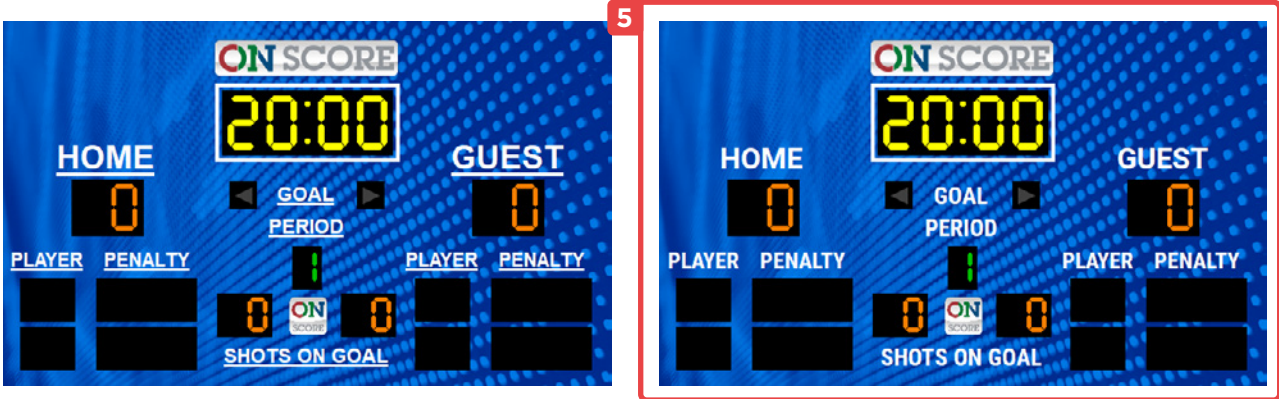
The interface is displaying its default texts, but you have the option to change the name of the values displayed.

- 1 Open the **Text** tab.
- 2 Edit the texts if needed.

### Changing the font

- 3 Change the font
- 4 Select the font and add/remove the effects if you want to change the underline of the texts.

In this example, we've changed the font style to a condensed font and removed the underlining effect.



## CHANGING THE TEAMS

- 1 Open the **Teams** tab.

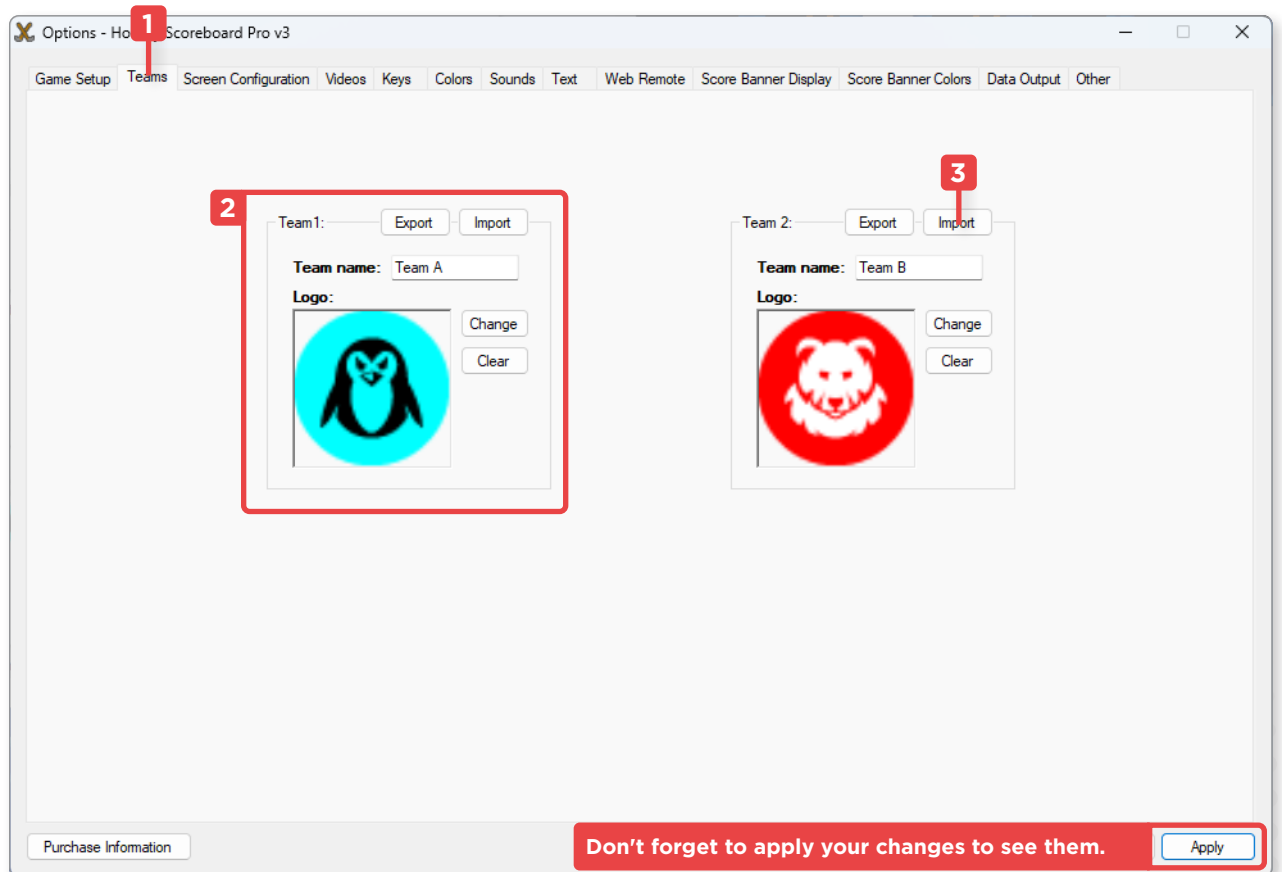
You can change the name of the teams as well as their logo.

- 2 Click on the **Change** button to set an image and **Clear** to remove it.

### Exporting the teams

You can import and export teams if needed, saving names, logos and players when available.

- 3 You can import a team file with the **Import** button, which will replace the name and logo, and export them as a file with the **Export** button.



With ON-Score software, you can broadcast videos directly to your screen.

These videos are integrated into playlists called **Video Queue**, allowing you to alternate the content displayed in a loop on the screen.

## CREATING A VIDEO QUEUE

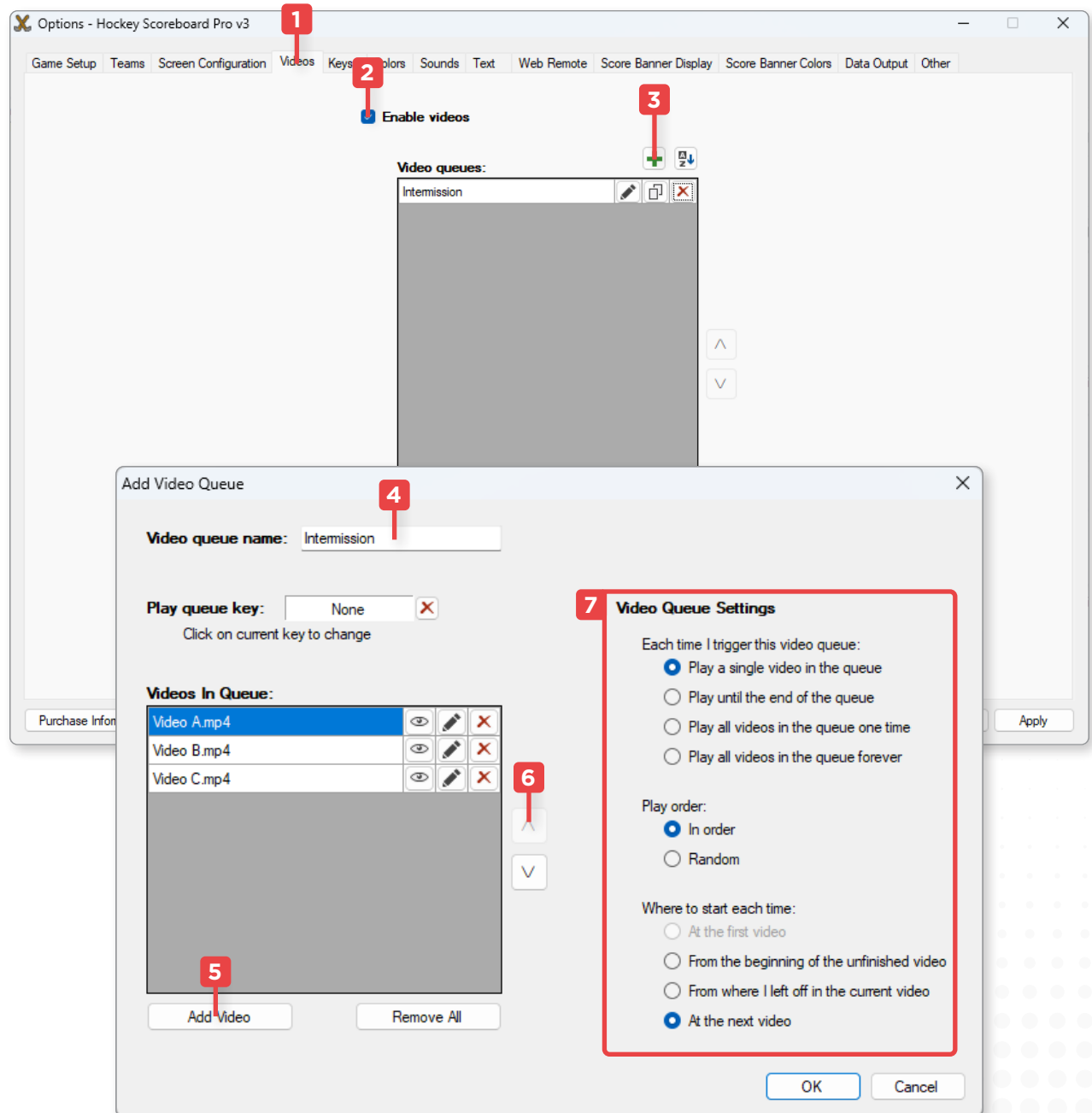
- 1 Open the **Videos** tab.
- 2 Enable videos if it is disabled.
- 3 Click on the button to create a new Video Queue.

## Editing a Video Queue

- 4 Give your list a name.
- 5 Add a video by clicking on the **Add Video** button.
- 6 Customize the order by selecting a video and using the arrows.
- 7 Configure your broadcasting list settings as needed.

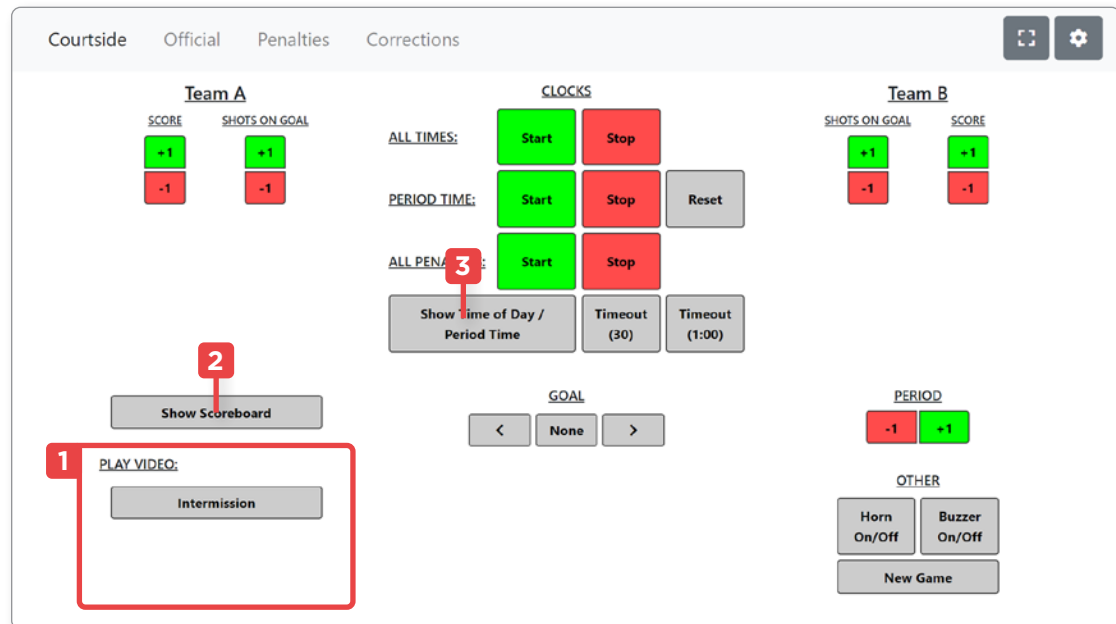
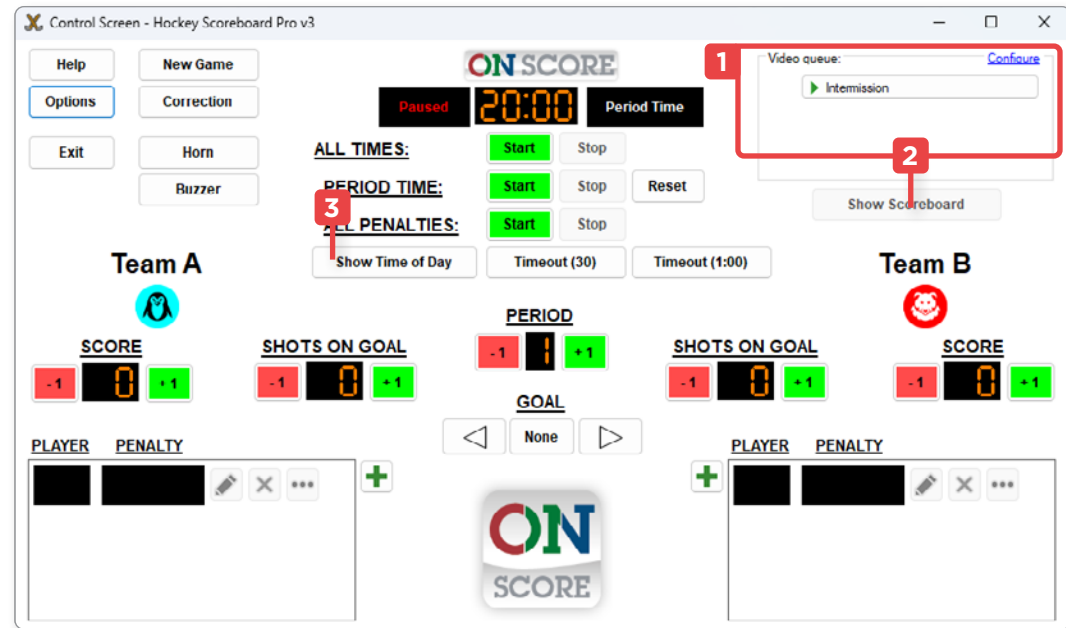
It's possible to customize the way your Video Queue plays when more than one video is included.

By default, the first video in the list is played when activated, and moves on to the next video when played a second time.



## PLAYING A VIDEO

- 1 You can start playing your Video Queue from your control interface, either from the Control Screen or from your ON-Score tablet.
- 2 Stop playing videos at any time by clicking on the **Show Scoreboard** button.
- 3 You also have the option of displaying the local time instead of the timer.



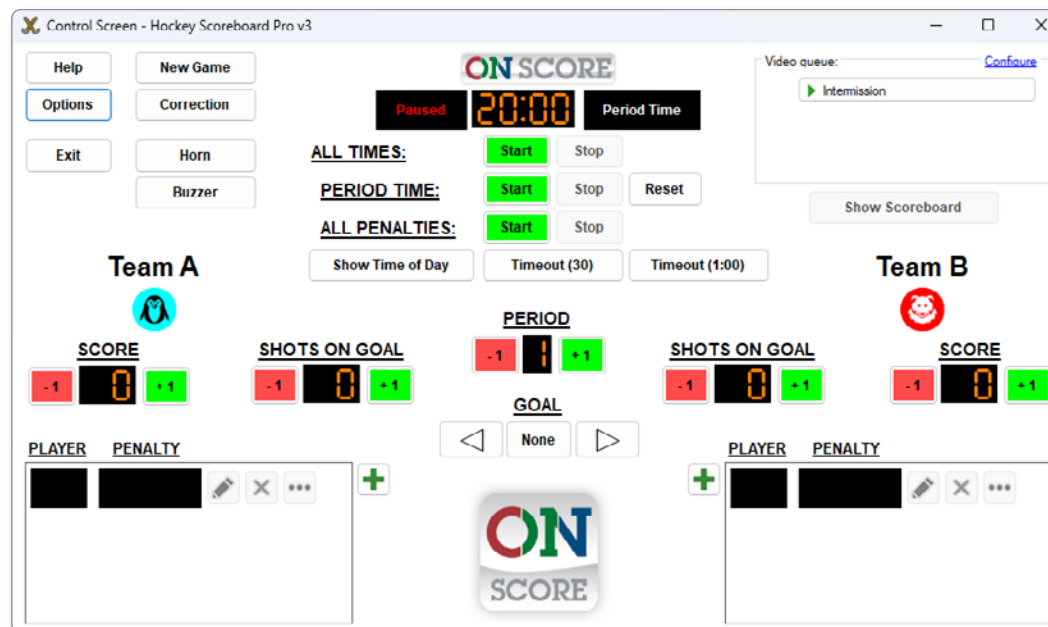
Need help with your content?,  
page 5

## CONTROL INTERFACE

### Control Screen

You can control your screen using the control interface.

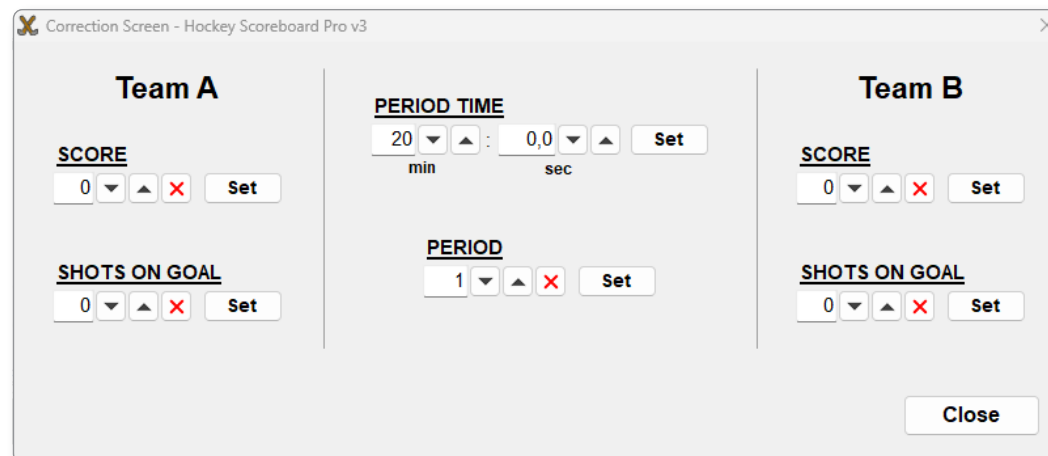
Use the buttons to start timers, change team scores and even add penalties.



### Correction Screen

The Correction screen lets you change the game's values, such as the period length and the scores, even while the game is in progress, to make adjustments if necessary.

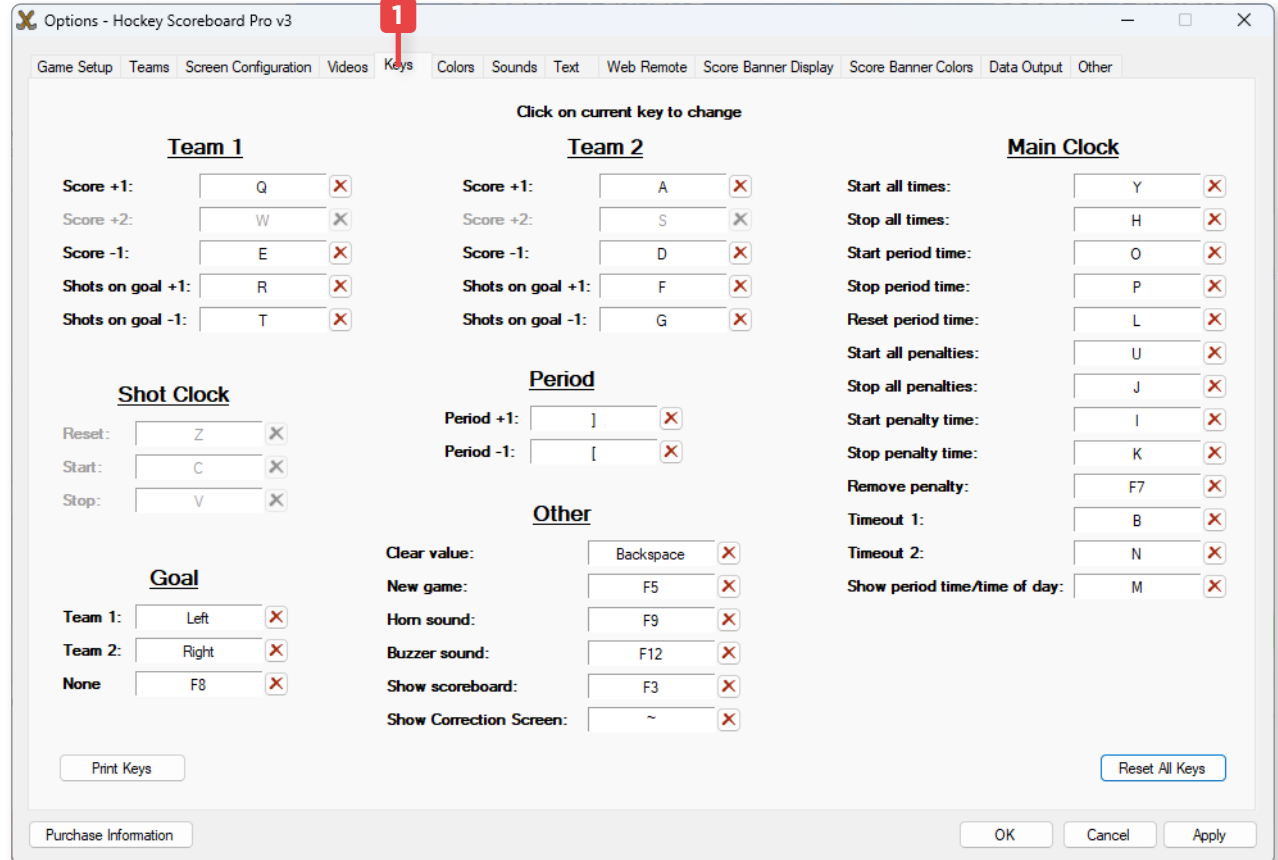
You can open the correction screen by clicking on the **Correction** button in your Control Screen or by pressing the **-** key on your keyboard.



## KEYBOARD SHORTCUTS

A keyboard is provided with the ON-Score computer, and you can use it to control your screen instead of using the interface.

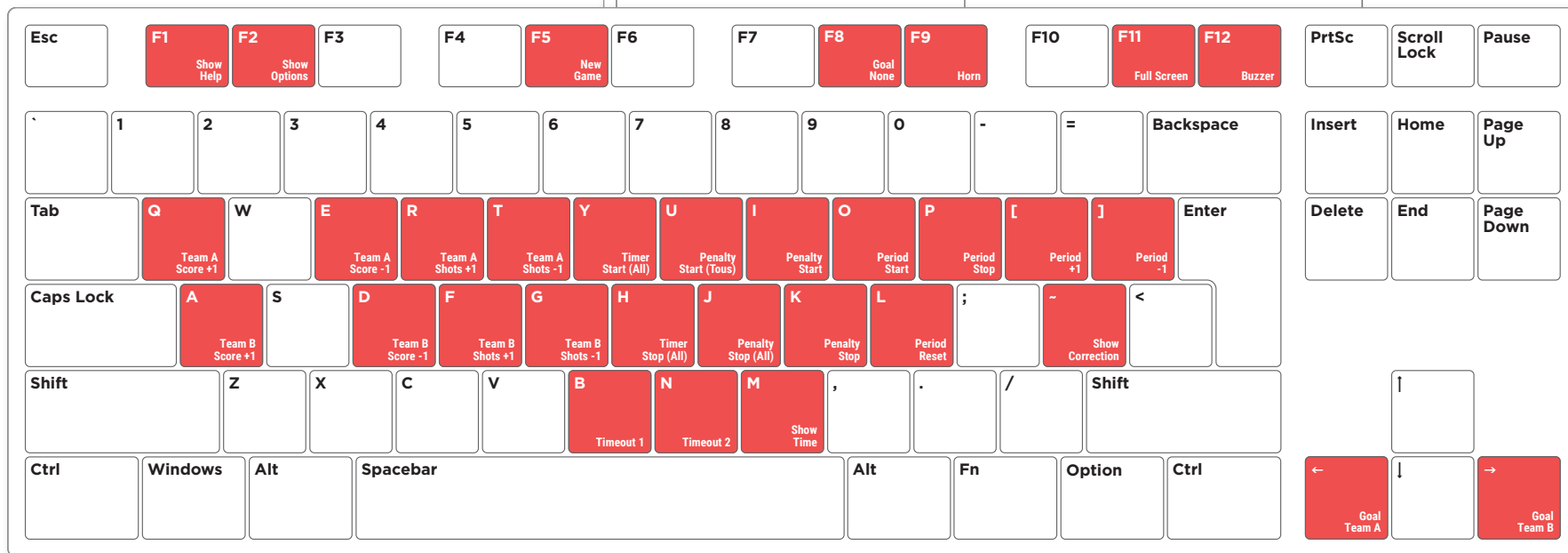
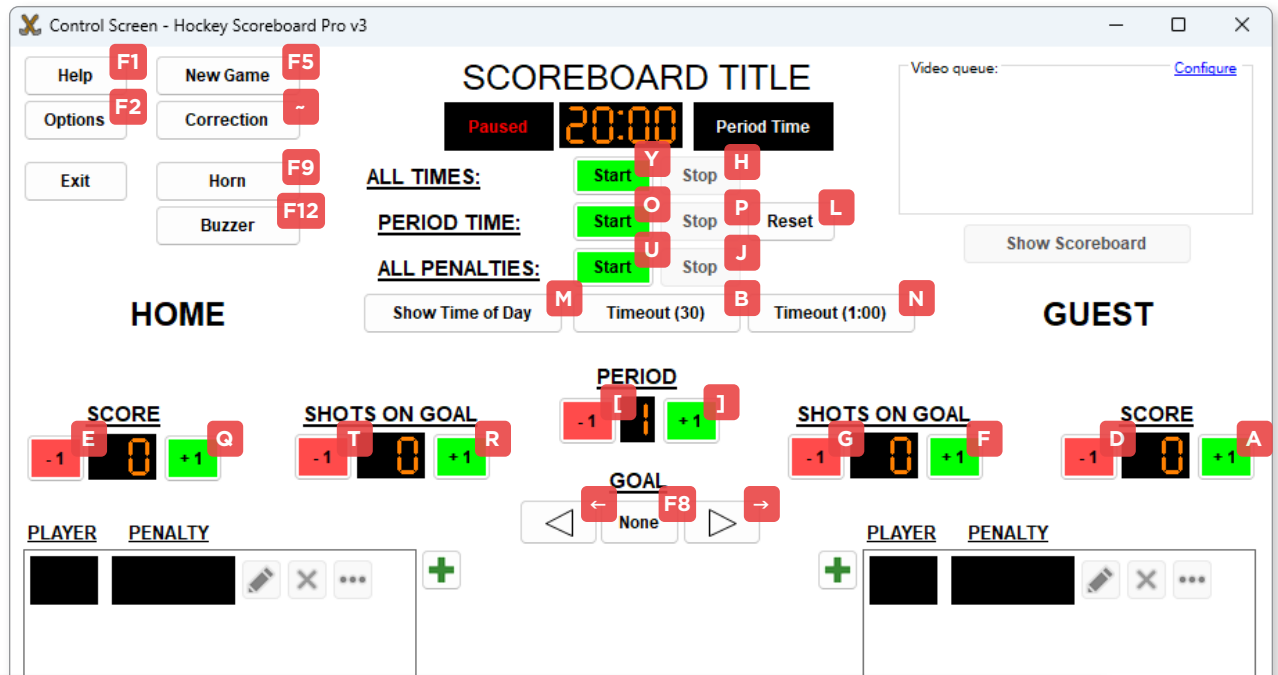
- 1 To view or change your shortcuts, open the **Keys** tab in your options menu.



## Control Screen shortcuts

Here's an overview of the Control Screen's shortcuts for Hockey Scoreboard Pro v3.

Note that the interface and shortcuts may vary depending on the version of the software and the sport selected.





## WEB REMOTE

The Web Remote is a simplified version of your Control Screen that lets you control your display remotely.

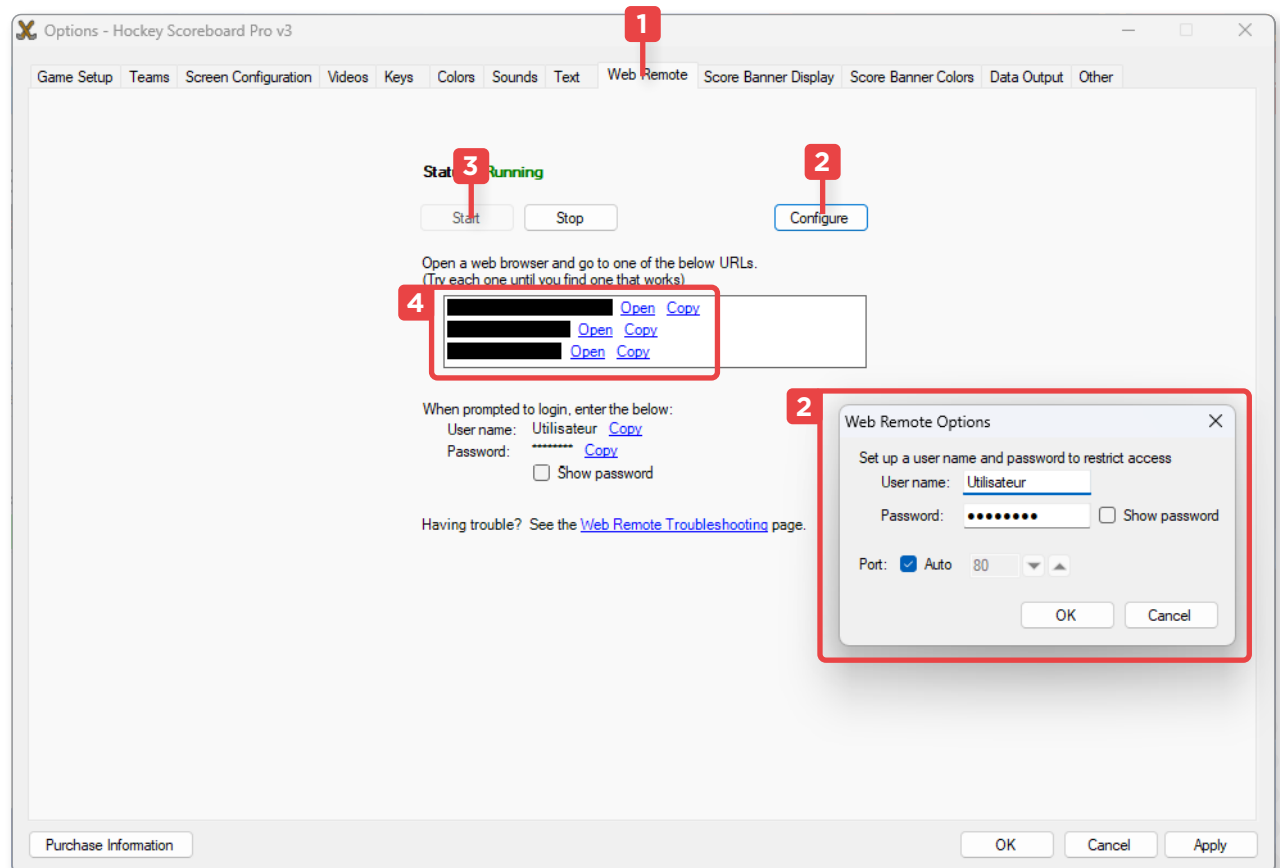
You can control your display using the ON-Score tablet or even your smartphone if it's connected to the same network as your computer running the ON-Score program.



### Enabling the Web Remote

- 1 To enable the web remote, go to the **Web Remote** tab of the options menu.
- 2 You can set up a user name and password to restrict the access of the Web Remote and prevent anyone else to control your screen, to do so, click on the **Configure** button.
- 3 Click on the Start button to launch the **Web Remote** server.
- 4 Once the server is up and running, you'll see some IP addresses appear in the zone.

You can access your control interface if your ON-Score tablet or mobile device is connected to the same network as your computer by entering one of these addresses in the search bar of your web browser.



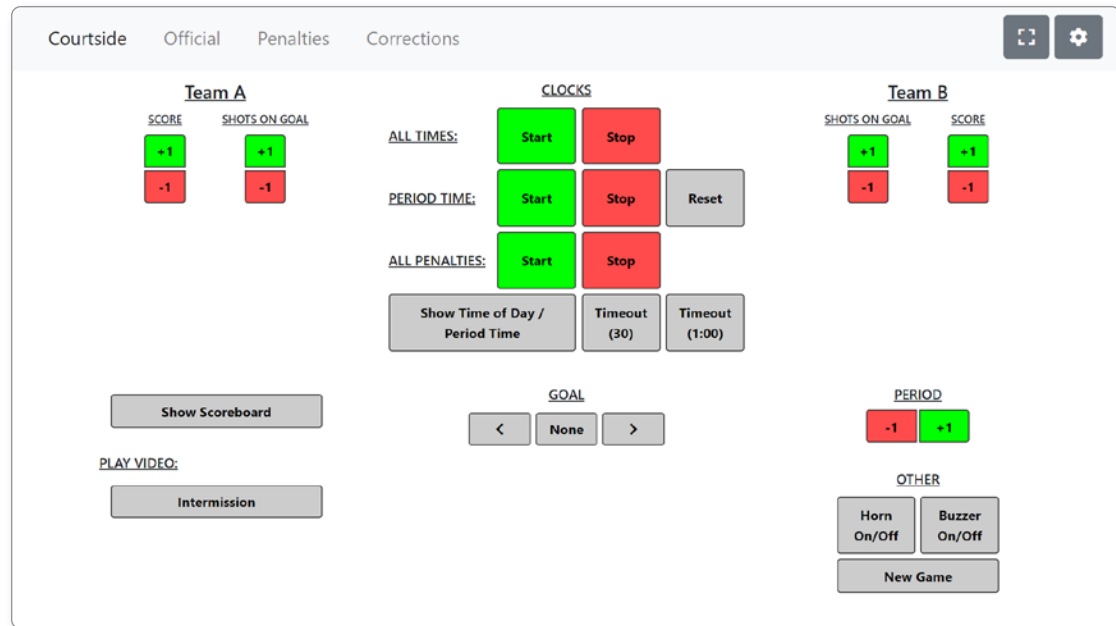
## USING THE WEB REMOTE

The ON-Score tablet displays the web remote control interface and allows you to control your display remotely.

### Main interface

Your ON-Score tablet's main interface displays a simplified version of your computer's Control Screen.

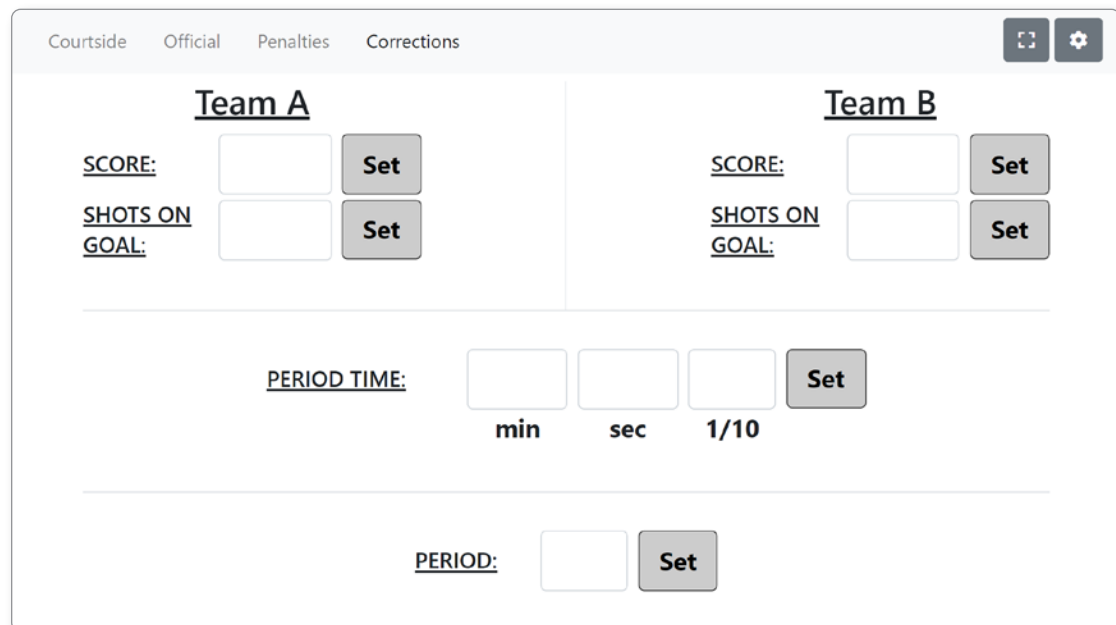
You can start timers, change team scores and even play your video playlists.



### Corrections tab

The corrections tab allows you to change your game values, manually edit scores and even change the period length.

To apply a change, click on the **Set** button.

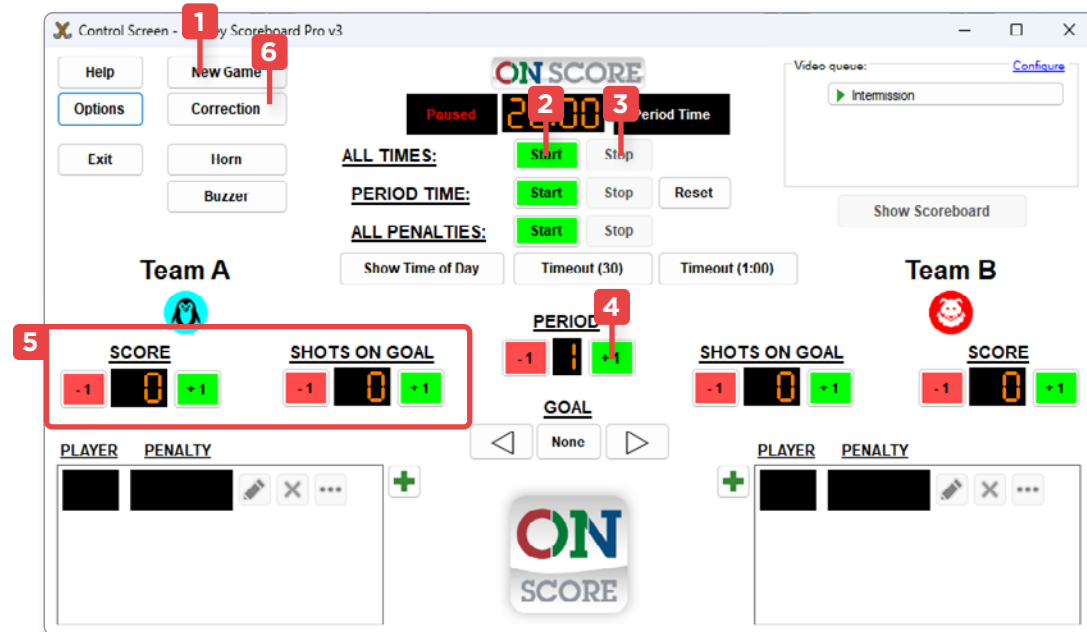


## STARTING A MATCH

- 1 Start a new game by pressing the **New Game** button or by pressing **F5** on your keyboard.
- 2 Start the main timer by pressing the **Start** button next to **ALL TIMES** or by pressing **Y** on your keyboard.
- 3 You can stop the timer by pressing the **Stop** button next to **ALL TIMES** or by pressing **H** on your keyboard.
- 4 To increase or decrease the period number, you can press the **+1** and **-1** button under **PERIOD** or by pressing the **[** and **]** buttons on your keyboard.

## CHANGING THE SCORES

- 5 You can press the **+1** and **-1** buttons of the desired team to change its score shots on goal.
- **For the team scores**  
 Team A: **Q** and **R** keys.  
 Team B: **A** and **D** keys.
  - **For the team shots on goal**  
 Team A: **R** and **T** keys.  
 Team B: **F** and **G** keys.
- 6 To change the scores manually, you can open the corrections screen by clicking on the **Correction** button or by pressing **~** on your keyboard.



## PENALTIES

**1** You can add a penalty to a player by pressing the **+** button under their team next to the penalty area.

This will open an interface where you can assign a penalty time to a player's number.

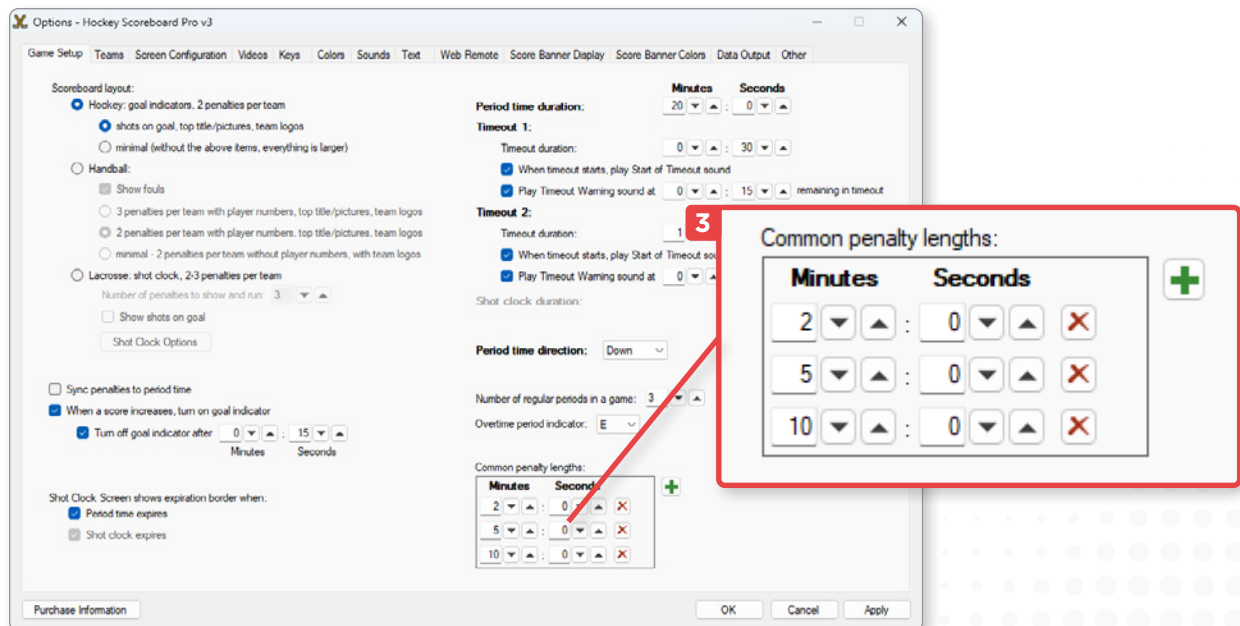
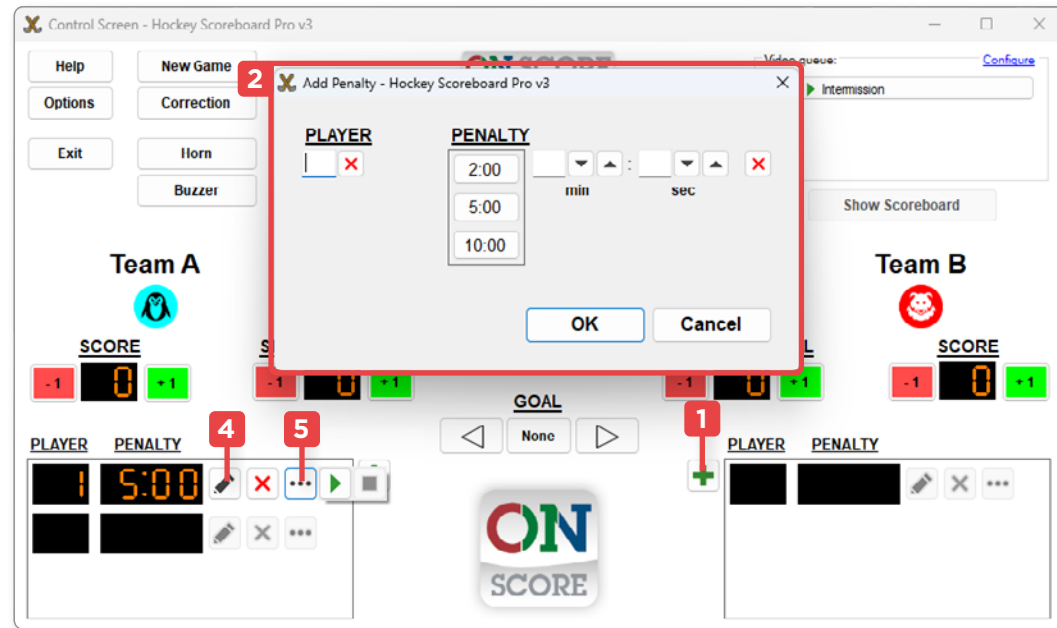
**2** First enter the player's number and click on the desired length of the penalty.

The penalty will be automatically enabled once you click **OK** to confirm if the game is in progress, and will be deleted when the timer reaches zero.

**3** You can change the default penalty duration in the options menu under **Game Setup** at the **Common penalty lengths**, where you can add or delete them.

**4** You can change or remove penalties using the buttons to their right.

**5** To enable or disable the timer for an individual penalty, use the **▶** and **■** buttons by clicking on the **...** button next to the desired penalty.



## TIMERS

**1 ALL TIMES** represents all the timers, stopping or starting it, affects the period and penalties.

**2 PERIOD TIME** represents the timer for the period displayed on the screen.

You can disable the game's main **PERIOD TIME** timer while keeping the **ALL PENALTIES** timer active.

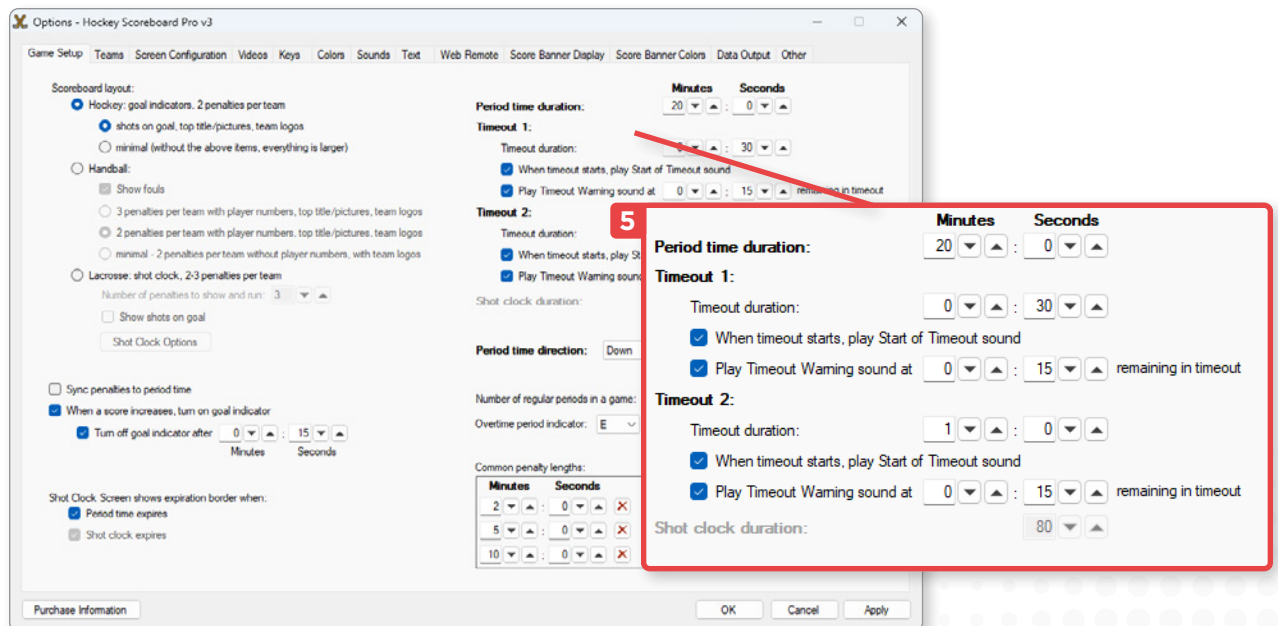
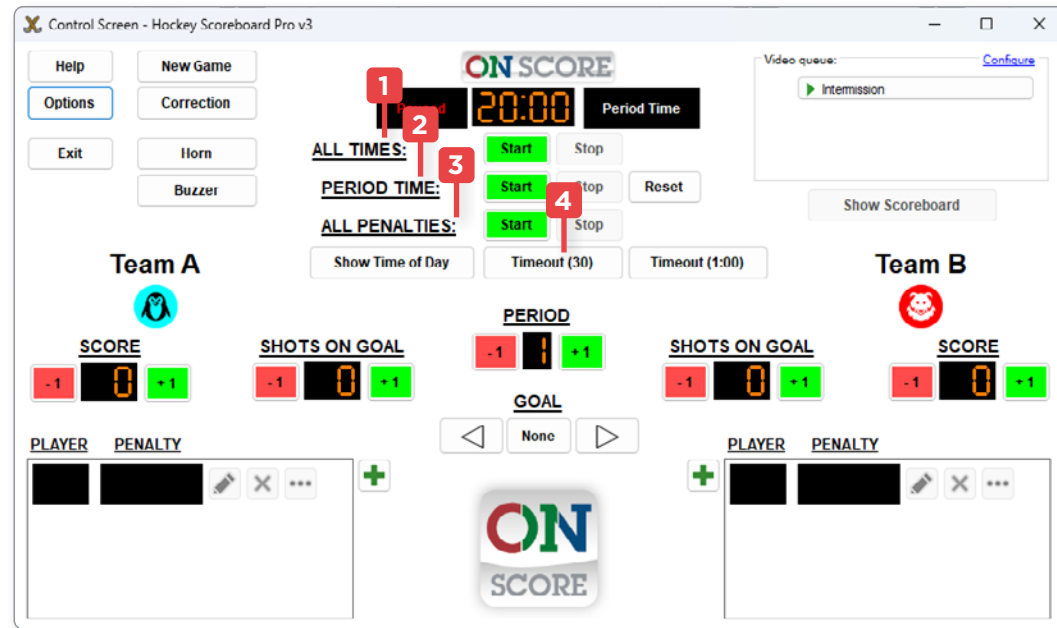
**3 ALL PENALTIES** represents the combined timer of all the penalty timers.

You can disable all penalties by disabling it, while keeping the period timer active.

**4** You can enable preset **Timeouts** by pressing on the **Timeout(30)** and **Timeout(1:00)** buttons, or by pressing the **B** and **N** keys on your keyboard.

To stop them, click on the same button or use the same keyboard key to return to the period timer.

**5** You can change the default period and timeout lengths in the options menu in the **Game Setup** tab under **Period time duration**, **Timeout 1** and **Timeout 2**.



## PROBLEM

The scoreboard is not shown on the correct screen.

## SOLUTION

### Method 1 - Reboot

Displays can sometimes be reversed when one of them has been unplugged. A reboot usually solves the problem.

1. Make sure your computer is switched on, and that both the control screen and the LED display are turned on and plugged in.
2. Restart your computer.

If you're having trouble navigating menus when your desktop is displayed on your LED screen, try the following method:

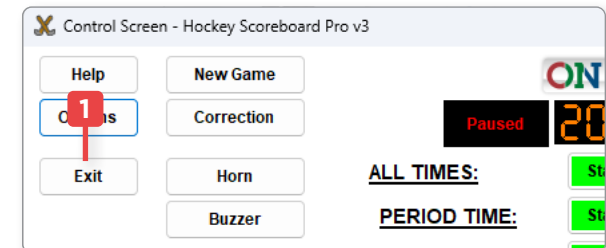
1. Press the **"Ctrl"**, **"Alt"** and **"Delete"** keys on your keyboard at the same time.
2. Use the **"Tab"** key to navigate through the options to the stop icon and press **"Enter"**.
3. Use the arrow keys on your keyboard to scroll through the options until you reach the **"Restart"** option, then press the **"Enter"** key.

Your computer will restart and should set your screens to the default settings. If the problem persists, try method 2.

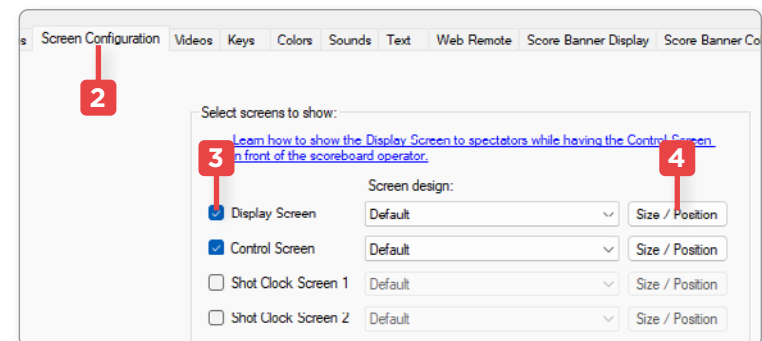
### Method 2 - Screen Configuration

If you can access your Control Screen interface, but your scoreboard is not showing on the LED screen, the display settings may have been reset.

- Make sure your screen is connected and that your On-Score software is running.
1. Open the options window using the **"Options"** button on the control panel on your computer, or by pressing the **"F2"** key on your keyboard.



2. Select the **"Screen Configuration"** tab.
3. Make sure **"Display Screen"** is checked.
4. Click on the **"Size / Position"** button to the right of the **"Display Screen"** option.



**PROBLEM**

The scoreboard is not shown on the correct screen. (Continued)

**TECHNICAL SUPPORT**

info@libertevision.com  
1-855 437-8720

8 a.m. to 4:30 p.m. Eastern Time.  
French and English.

**SOLUTION****Method 2 - Screen Configuration (Continued)**

1. Select the "Specific display" option.
2. Click on the "Next Step" button.

**Interactive** Allow me to size and position the window on the computer using my mouse.  
 **Specific display** Allow me to choose a display connected to the computer, then choose a size and location on that display.  
 **Entire desktop** Allow me to choose a size and location on the computer's entire desktop.

Next Step

3. Under Display, select "Display 2".
4. Under Positioning, select "Full Screen".
5. Finally, click on the "Finish" button.

Display: Display 2 (1920 x 1200 at 1920, 0)  
 Positioning: Full screen  
 Specific size and position:  
 X: 1080 Width: 640  
 Y: 100 Height: 384

(Note: screen will update as you change the above settings)

Finish

**If the problem persists**

Please contact **Libertévision** technical support:

[info@libertevision.com](mailto:info@libertevision.com)  
**+1 855 437-8720**